

**JAC** MOTORS

# DIESEL LIGHT **C** TRUCK



# HELLO, WE'RE JAC. OVER 60 YEARS OF TRUCKING

While having flown under the radar in New Zealand until recently, JAC has a history of over 60 years. Today, JAC (pronounced "Jack") is a leading commercial vehicle manufacturer, proudly holding the title of China's #1 premium commercial vehicle exporter, with a global presence in over 100 countries.

## Strategic Partnerships and Innovative Spirit

JAC Motors has strong partnerships with Volkswagen Group, Cummins, and Huawei to driving innovation and growth. With a wide range of vehicles sold in over 100 countries, JAC has established itself as a trusted name in the industry.



## GLOBALLY PROVEN

The JAC brand is tried and trusted internationally, its impressive client roster includes renowned companies including:



PepsiCo drivers boast about the improved driving experience



Heineken launch their JAC EV Trucks



DHL'S JAC EV Fleet helping to achieve decarbonisation goals



A saucy choice... Kraft Heinz JAC EV Truck

## BACKED BY KIWIS FOR 100+ YEARS



Your JAC vehicle is supported by a team of Kiwi experts with a wealth of knowledge and over 100 years of supporting Kiwis in automotive.

JAC Motors New Zealand is proudly backed by NZ Automotive Ltd (NZAL), a subsidiary of CMC Ltd, a well-established and respected automotive retailer and distributor group with a rich history dating back to 1911.



After a digital version of this brochure?

Find our brochures online at [jacnz.co.nz/brochure](http://jacnz.co.nz/brochure) or scan the QR code:



# BUILT ON INNOVATION, DRIVEN BY TRUST

When you're behind the wheel of a JAC Truck, you're proudly supported by the best global brands and parts.

Whether you're being powered by a Cummins Diesel, a CATL EV Battery, or relying on the sought after Allison Auto transmission JAC has your back with top parts and suppliers:



# READY TO BE PUT TO WORK

**JAC**  
WARRANTY

**5** 

**\*  
YEARS**  
**200,000KM**

\* Whichever occurs first, warranty t&c's apply.

Tough Engines



Tough Frame + Suspension



Tough Transmission Options



Used in Manual Option



Used in Automatic Option

Tough Axle + Power Train



+ World Class Parts

**Honeywell**

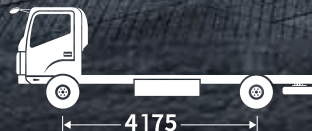


**BOSCH**

# THE JAC OF YOUR TRADE

JAC trucks can be refitted into different bodies based on your needs including; refrigerated box, ambient box, flat deck, curtain sider, tipper and more.

With multiple wheelbases available, we can work with you to build the JAC of your trade.



## Multiple wheelbases

Covering 3365/3845/4175mm wheelbases, there is a JAC truck to suit your needs.

# SAFETY

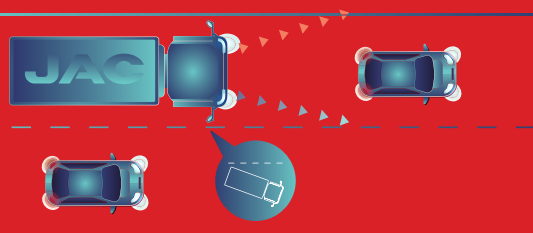
## Dual Airbags

The dual airbag system is designed to improve occupant safety in the event of a collision.



## Pre-tensioner Seatbelts

In the event of a collision, the pre-tensioner seatbelt system is designed to effectively cooperate with the airbag system to reduce impacts on the body.



## ESC

### Electronic Stability Control

ESC uses data from a number of sensors to monitor driver input and vehicle control. If it detects under-steer, over-steer or roll-over, ESC can override driver input, reduce power and/or apply individual wheel braking to assist the driver to maintain vehicle control.



## Reinforced Cab Support

The longitudinal beam assembly of the front part of the JAC Truck cab support plate is designed as a closed section using high-rigidity steel. Additionally, an anti-collision girder steel is installed inside the door to ensure passengers' security.



## Optimised Brake System + Air Brakes

The exhaust brake decreases braking times to make braking more reliable and safer. This also helps to prolong the lifespan of your brakes.

# READY TO DRIVE

Overhead storage compartments

Intelligent and thoughtfully laid out comfortable cabins to make you feel right at home behind the wheel.

8 inch touch screen entertainment system, with multi-function integrated controls and options

Cup holders

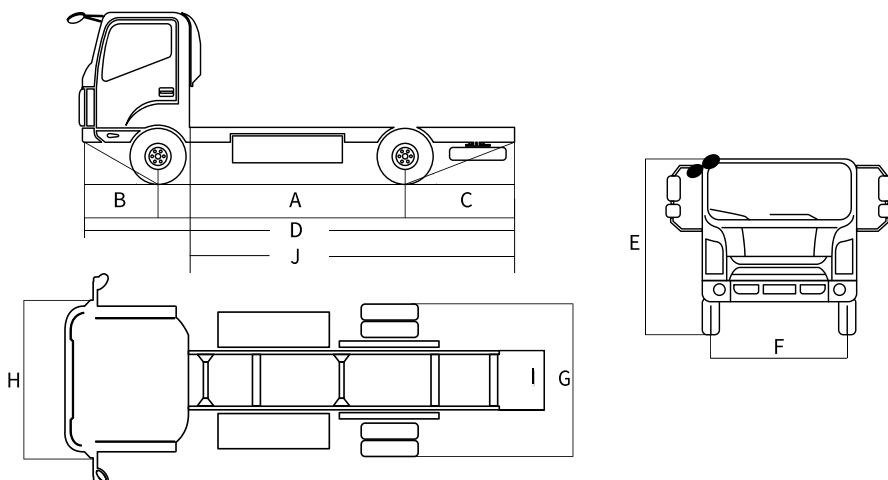
Adjustable steering wheel

Manual and Allison 1000 Automatic options available

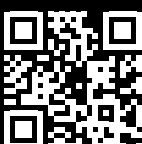
Smooth cab suspension designed to keep driver and passengers comfortable

Convenient cab tray for storage of loose items or paperwork

N90 Diesel	3365 wheelbase Automatic	3845 wheelbase Automatic	3845 wheelbase Manual	4175 wheelbase Manual
<b>Weight</b>				
GVW (kg)	9000 OR 5990			
Tare Weight (kg)	3025	3050	3010	3025
<b>Engine</b>				
Model	Cummins B4.0EVID170		Cummins B4.0EVID170	
Fuel	Diesel		Diesel	
Emissions	Euro6		Euro6	
Type	4 Cylinder -Turbocharged		4 Cylinder -Turbocharged	
Displacement (cc)	4.0		4.0	
<b>Motor Performance</b>				
Horsepower	165		165	
Max Power (kW / rpm)	125/2400		125/2400	
Max Torque (Nm / rpm)	600/1100~1800		600/1100~1800	
<b>Vehicle Performance</b>				
Max Speed (km/h)	110		110	
Max Gradability (%)	30		30	
<b>Transmission</b>				
Transmission Type	Automatic 6 Speed - Allison 1000		Manual 6 Speed with Clutch Assistance - ESO-6106	
<b>Chassis Frame</b>				
Cold riveted ladder frame QSTE650-5 steel side members Parallel side rails and rivetless top flange		214*70*5mm - please refer to JAC Dealer for more information		
<b>Steering</b>				
Steering Type	Recirculating Ball Type		Recirculating Ball Type	
Power Steering	Y		Y	
Turning Circle	12.2	13.0	13.0	15.6
<b>Axle Capacity</b>				
Front Beam (kg)	3100		3100	
Rear Beam (kg)	6600		6600	
Gear Ratio	4.33		3.909	
<b>Braking</b>				
Brake Type	Air Brake		Air Brake	
Parking Brake	Air Brake		Air Brake	
Brakes	Disc/Drum		Disc/Drum	
Exhaust Braking	Y		Y	
<b>Safety</b>				
ABS - Anti-lock Braking System	Y		Y	
ESC - Electronic Stability Control	Y		Y	
Reverse Radar + Alert	Y		Y	
Reverse Camera	Y		Y	
<b>Dimensions</b>				
Wheelbase (mm) A	3365	3845	3845	4175
Front Overhang (mm) B	1100		1100	
Rear Overhang (mm) C	1400	2025	2025	2330
Length (mm) D	5922	6990	6990	7650
Cab Height (mm) E	2290		2290	
Front Wheel Track (mm) F	1710		1710	
Rear Axle Width (mm) G	2115		2115	
Cab Width (mm) H	1995		1995	
Outside Chassis Width (mm) I	850		850	
Cab to Rear of Chassis (mm) J	4300	5200	5200	5800
Tyres	215/75R17.5		215/75R17.5	
Fuel Tank Capacity (L)	130		130	



\*Whichever occurs first, warranty t&c's apply.



www.jacnz.co.nz 0800 922 522 hello@jacnz.co.nz

\*Specifications and images shown in this brochure may be subject to change or depict overseas models

**JAC MOTORS**  
**NEW ZEALAND**

